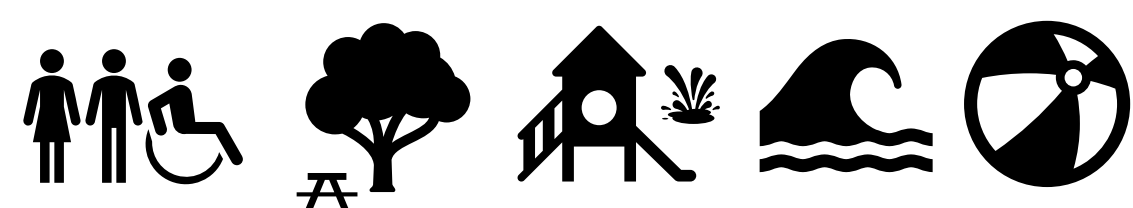


WELCOME!



ROBERT SIMPSON PARK REFRESH

Conceptual Design



PROJECT OBJECTIVES

The main goal of this project is to revitalize Robert Simpson Park to provide additional and renewed active and passive recreational opportunities in order to revive the Park and enhance its position as a key outdoor inclusive space for the community.

Enhance the vibrancy and functionality of the waterfront, amenities, and green space providing accessibility to all visitors and creating a lasting positive experience.

TECHNICAL STUDIES COMPLETED TO-DATE

- » Stage 1 Archaeological Assessment
- » Marine Archaeological Overview Assessment
- » Environmental Impact Assessment
- » Geotechnical Investigation
- » Hydrotechnical Investigation



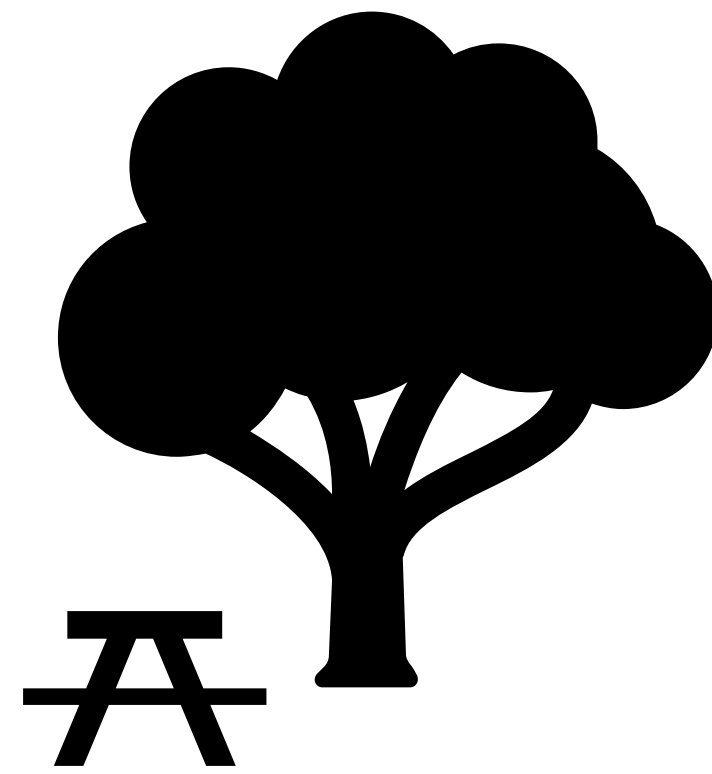
PROPOSED PARK IMPROVEMENTS

UPPER PARK



Accessibility, Connectivity & Inclusivity:

- » Accessible pathways to connect park amenities
- » Accessible pedestrian ramp to the beach
- » Accessible and inclusive washrooms
- » Accessible parking upgrades



Visitor Experience:

- » New seating and picnic areas
- » Drinking fountains and recycling / waste receptacles
- » Urban Canopy Renewal



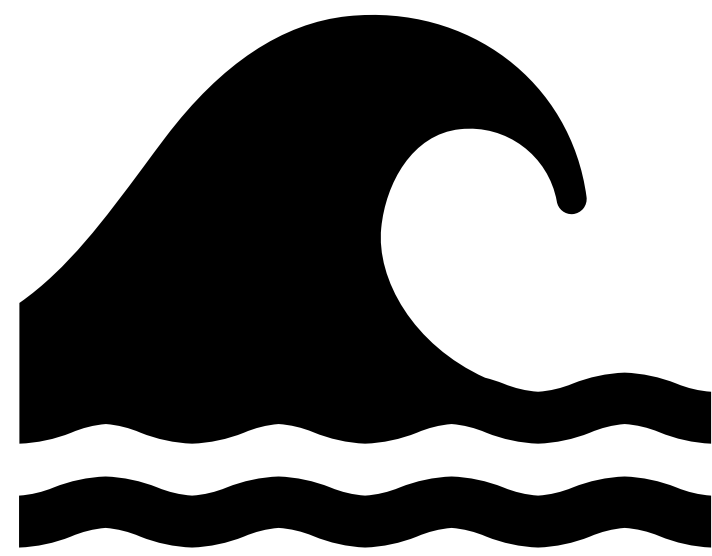
Celebration & Play:

- » Renewed Children Play Area (splashpad + play structures)

PHASE 1 (UPPER PARK, 2026)

PATHWAYS
+
CHILDREN PLAY AREA
+
WASHROOM BUILDING UPGRADES

LOWER PARK



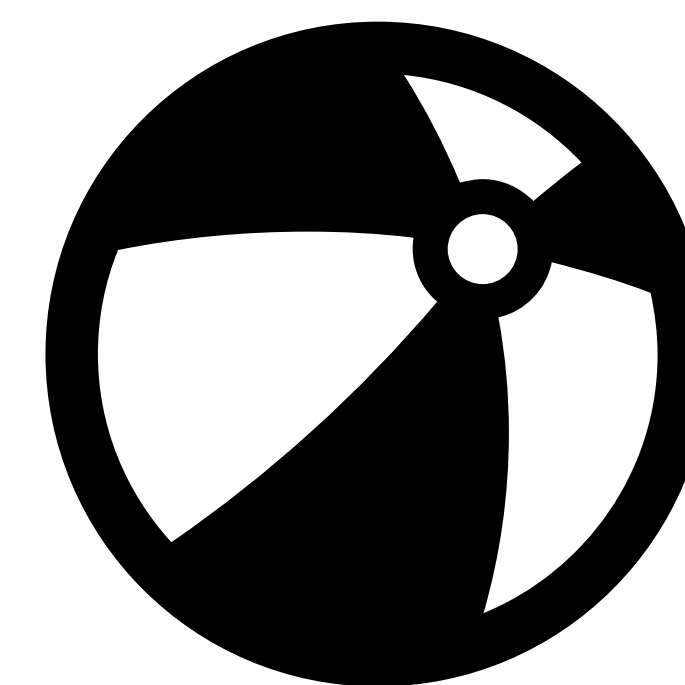
Waterfront Experience:

- » Breakwater / Pier reinstatement
- » Accessible boardwalk extending the waterfront experience
- » Shoreline protection (vegetation and retaining walls)



Visitor Experience:

- » New seasonal change huts at the beach
- » Urban Canopy Renewal



Celebration & Play:

- » Sand Area Upgrades (addition of volleyball courts)

PHASE 2 (LOWER PARK, FUTURE)

BREAKWATER / PIER
+
BOARDWALK
+
SAND AREA UPGRADES



ROBERT SIMPSON PARK REFRESH

Conceptual Design

UPPER PARK

LEGEND

BENCH	2.0 m WIDE ASPHALT PATHWAY
PICNIC TABLES	CONCRETE SURFACES
BIKE RACK	UNIT PAVERS
PEDESTRIAN LIGHT	PROPOSED TREE

PARK AMENITY FEATURES

PROPOSED FEATURES

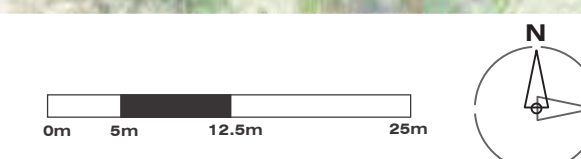
- ① ACCESSIBLE PEDESTRIAN PATHWAY WITH LIGHTING
- ② PICNIC PLAZA
- ③ WASHROOM UPGRADES
- ④ UPPER VIEWING PLAZA
- ⑤ PARKING UPGRADES
- ⑥ PLAY AREA
- ⑦ SPLASH PAD
- ⑧ PLAYGROUND PLAZA
- ⑨ WING PLAZA (PROVISIONAL)
- ⑩ ACCESSIBLE BEACH ACCESS WALKWAY
- ⑪ BICYCLE PARKING

EXISTING FEATURES

- A GAZEBO
- B GRAND STAIRS
- C CANTEEN
- D WATER FOUNTAIN

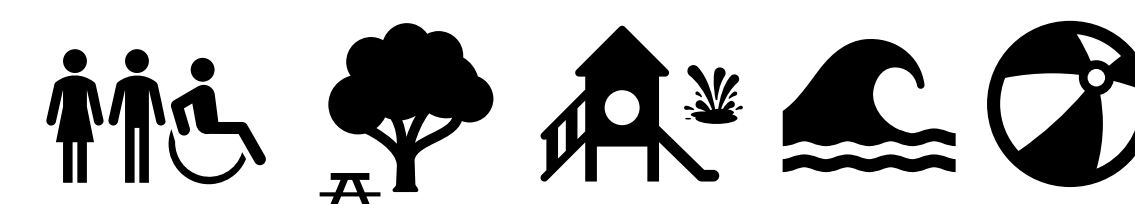


NOTE: While every effort will be made to provide the features shown on this plan, some revisions may be necessary during detailed design, tendering, and construction.



TELL US WHAT YOU THINK!

- » Leave a sticky note.
- » Complete a comment sheet.





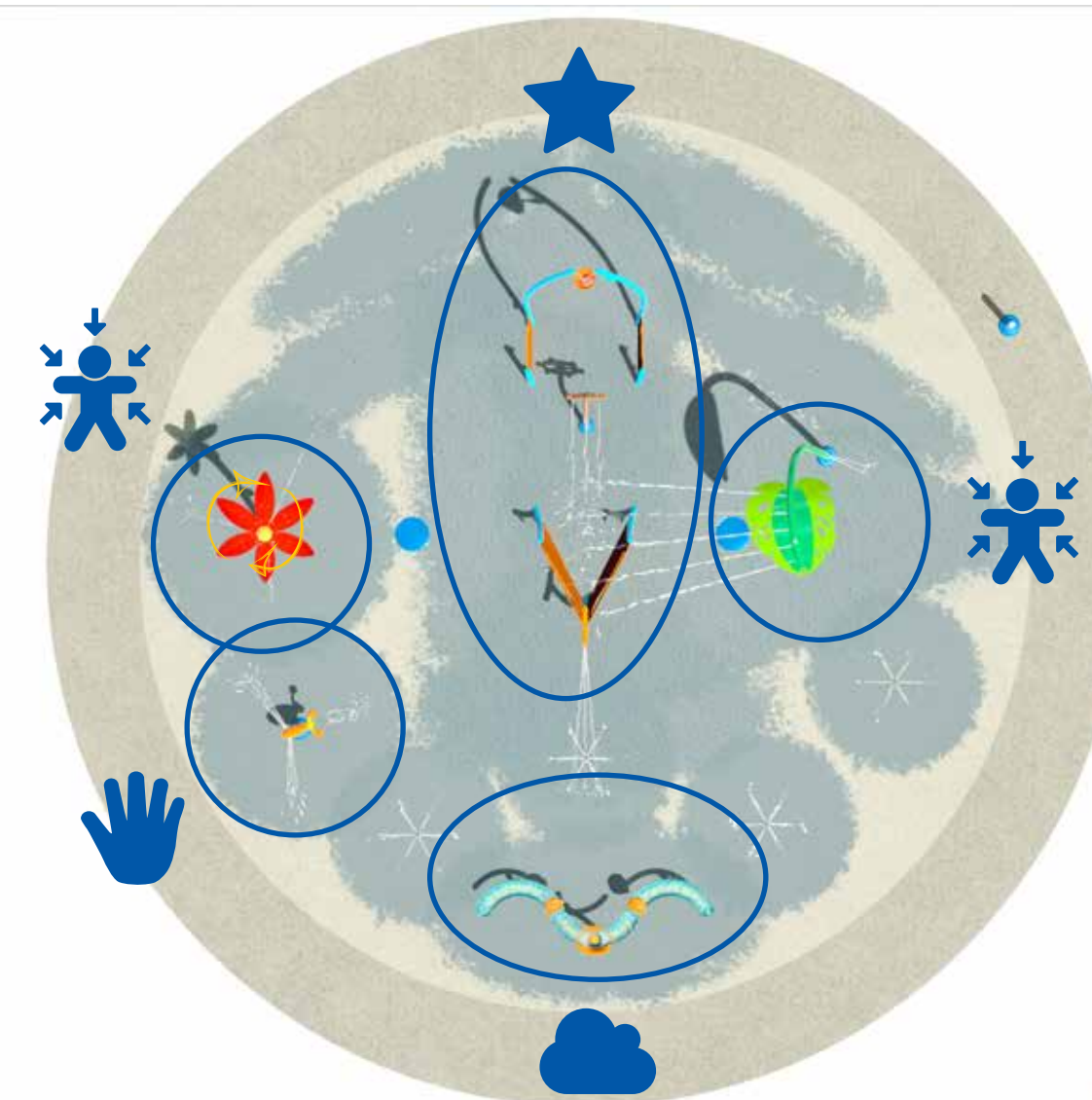
SPLASH PAD OPTION 1 - BOAT ADVENTURE



Family



TELL US WHAT YOU THINK!
» Vote for your favorite option on the summary board.



Toddler



Teen



» Play Features

- » Age Group: 18 months to 12 years
- » Play Value Planning:
 - Fun interactive features serving as a social gathering place.
 - Cloud-like experience giving refreshing thrills.
 - Multiple sense experiences to stimulate and develop.
 - Discovery of water textures.

NOTE: While every effort will be made to provide the features shown on this plan, some revisions may be necessary during detailed design, tendering, and construction.



SPLASH PAD OPTION 2 - GROUND PLAY



TELL US WHAT YOU THINK!
» Vote for your favorite option on the summary board.



» Play Features

- » Age Group: 18 months to 12 years
- » Play Value Planning:
 - Fun interactive features encouraging movement.
 - Spray experience giving refreshing thrills.
 - Multiple sense experiences to stimulate and develop.
 - Discovery of water textures.



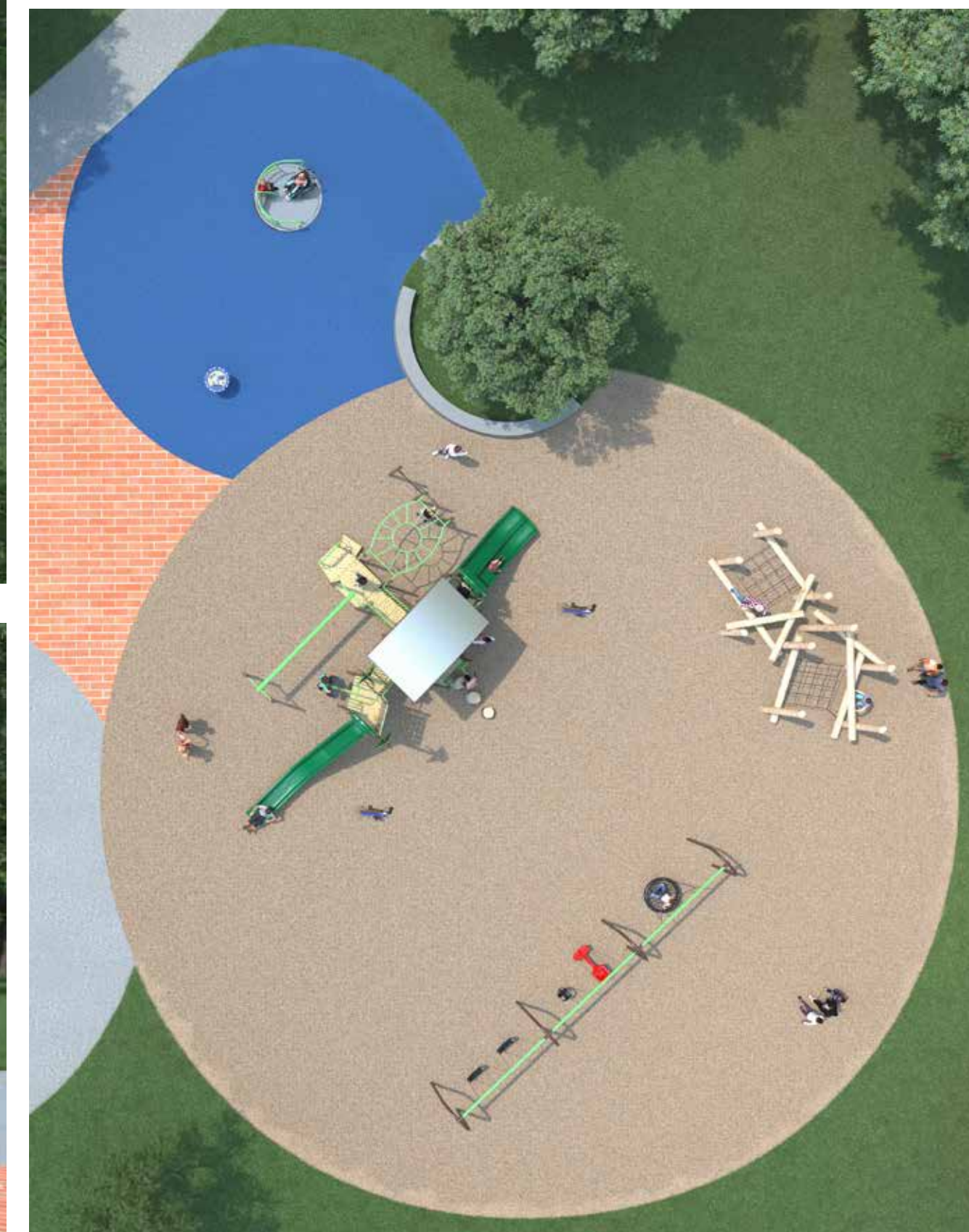
NOTE: While every effort will be made to provide the features shown on this plan, some revisions may be necessary during detailed design, tendering, and construction.



PLAYGROUND STRUCTURE OPTION 1 - WILD ADVENTURE



TELL US WHAT YOU THINK!
» Vote for your favorite option on the summary board.



- » **Play Features**
- » Capacity: 86 children
 - » Age Group:
 - Structure - 5 years to 12 years
 - Canoe Motion Toy - 2 years to 12 years
 - Swing Set - 18 months to 5 years
 - » Accessible / Inclusive / Adaptive Elements:
 - The Structure is accessible through a transfer station and has a variety of game including therapeutic rings and counter panels.
 - The Surface Spinner is fully accessible by all users through the rubberized surfacing.



NOTE: While every effort will be made to provide the features shown on this plan, some revisions may be necessary during detailed design, tendering, and construction.



PLAYGROUND STRUCTURE OPTION 2 - BOAT ADVENTURE



TELL US WHAT YOU THINK!

» Vote for your favorite option on the summary board.



» **Play Features**

- » Capacity: 63 children
- » Age Group:
 - Boat Structure, Small Seated Spinner, Universal Carousel - 18 months to 12 years
 - Bird Mini Climber - 18 months to 5 years
- » Accessible / Inclusive / Adaptive Elements:
 - The Boat Structure is accessible through a transfer station and has a variety of game counters, ship themed panels, a telescope and a boat steering wheel accessible through the rubberized surfacing.
 - The Universal Carousel is fully accessible by all users through the rubberized surfacing.



NOTE: While every effort will be made to provide the features shown on this plan, some revisions may be necessary during detailed design, tendering, and construction.



PLAYGROUND STRUCTURE OPTION 3 - NATURE ESCAPE



TELL US WHAT YOU THINK!
» Vote for your favorite option on the summary board.



» Play Features

- » Capacity: 80 children
- » Age Group:
 - Structure, Chill Spinner - 5 years to 12 years
 - Cozy Dome, Boat - 18 months to 5 years
 - Cycler, OptiGear - 18 months to 12 years
- » Accessible / Inclusive / Adaptive Elements:
 - The Structure is accessible through a transfer station and has a variety of game counters and talk tubes.
 - The Chill Spinner, Ship, OptiGear panel, and Cycler are fully accessible by all users.



NOTE: While every effort will be made to provide the features shown on this plan, some revisions may be necessary during detailed design, tendering, and construction.

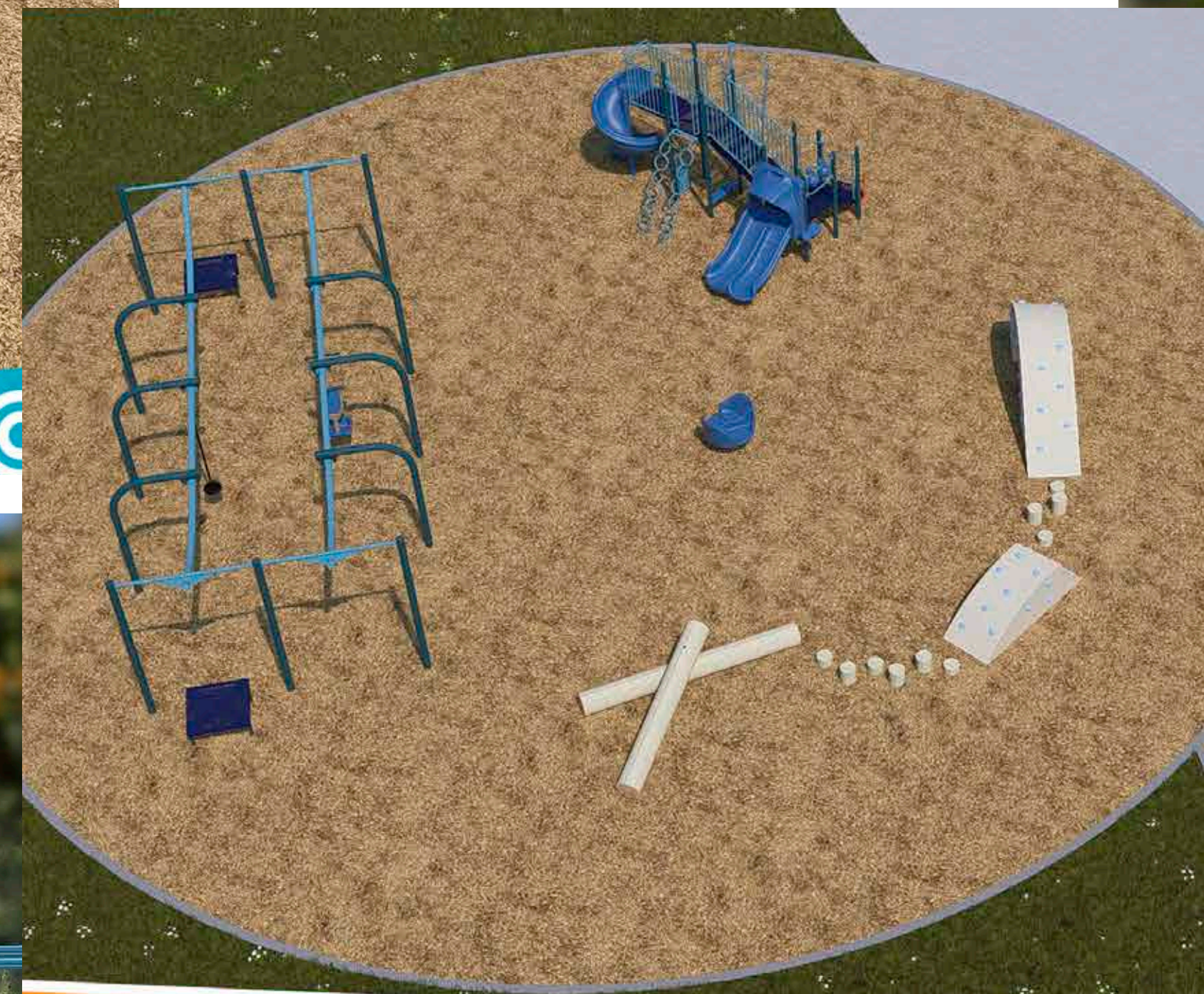


PLAYGROUND STRUCTURE OPTION 4 - WOOD WAVES



TELL US WHAT YOU THINK!

» Vote for your favorite option on the summary board.



» Play Features

- » Capacity: 80 children
- » Age Group: 18 months to 12 years
- » Accessible / Inclusive / Adaptive Elements:
 - Duo Spinner
 - Track Ride with Zero-G Seat
 - Ground-level Bongos
 - Ground-level Storefront Panel & Fun Seat
 - The Structure is accessible through a transfer station.



NOTE: While every effort will be made to provide the features shown on this plan, some revisions may be necessary during detailed design, tendering, and construction.



SPLASH PAD



OPTION 1 - BOAT ADVENTURE

» Play Features

- » Age Group: 18 months to 12 years
- » Play Value Planning:
 - Fun interactive features serving as a social gathering place.
 - Cloud-like experience giving refreshing thrills.
 - Multiple sense experiences to stimulate and develop.
 - Discovery of water textures.



OPTION 2 - GROUND PLAY

» Play Features

- » Age Group: 18 months to 12 years
- » Play Value Planning:
 - Fun interactive features encouraging movement.
 - Spray experience giving refreshing thrills.
 - Multiple sense experiences to stimulate and develop.
 - Discovery of water textures.

SHADE SHELTER



OPTION 1 - INDIVIDUAL POSTS



OPTION 2 - SAILS

SWING SET



OPTION 1 - WITH NEST SWING



OPTION 2 - PARENT/CHILD SWING

TELL US WHAT YOU THINK!

- » Use stickers and choose your favorite option.
- » Leave a sticky note.
- » Complete a comment sheet.





PLAYGROUND STRUCTURE



OPTION 1 - WILD ADVENTURE

» Play Features

- » Capacity: 86 children
- » Age Group:
 - Structure - 5 years to 12 years
 - Canoe Motion Toy - 2 years to 12 years
 - Swing Set - 18 months to 5 years
- » Accessible / Inclusive / Adaptive Elements:
 - The Structure is accessible through a transfer station and has a variety of game including therapeutic rings and counter panels.
 - The Surface Spinner is fully accessible by all users through the rubberized surfacing.



OPTION 2 - BOAT ADVENTURE

» Play Features

- » Capacity: 63 children
- » Age Group:
 - Boat Structure, Small Seated Spinner, Universal Carousel - 18 months to 12 years
 - Bird Mini Climber - 18 months to 5 years
- » Accessible / Inclusive / Adaptive Elements:
 - The Boat Structure is accessible through a transfer station and has a variety of game counters, ship themed panels, a telescope and a boat steering wheel accessible through the rubberized surfacing.
 - The Universal Carousel is fully accessible by all users through the rubberized surfacing.



OPTION 3 - NATURE ESCAPE

» Play Features

- » Capacity: 80 children
- » Age Group:
 - Structure, Chill Spinner - 5 years to 12 years
 - Cozy Dome, Boat - 18 months to 5 years
 - Cyclor, OptiGear- 18 months to 12 years
- » Accessible / Inclusive / Adaptive Elements:
 - The Structure is accessible through a transfer station and has a variety of game counters and talk tubes.
 - The Chill Spinner, Ship, OptiGear panel, and Cyclor are fully accessible by all users.



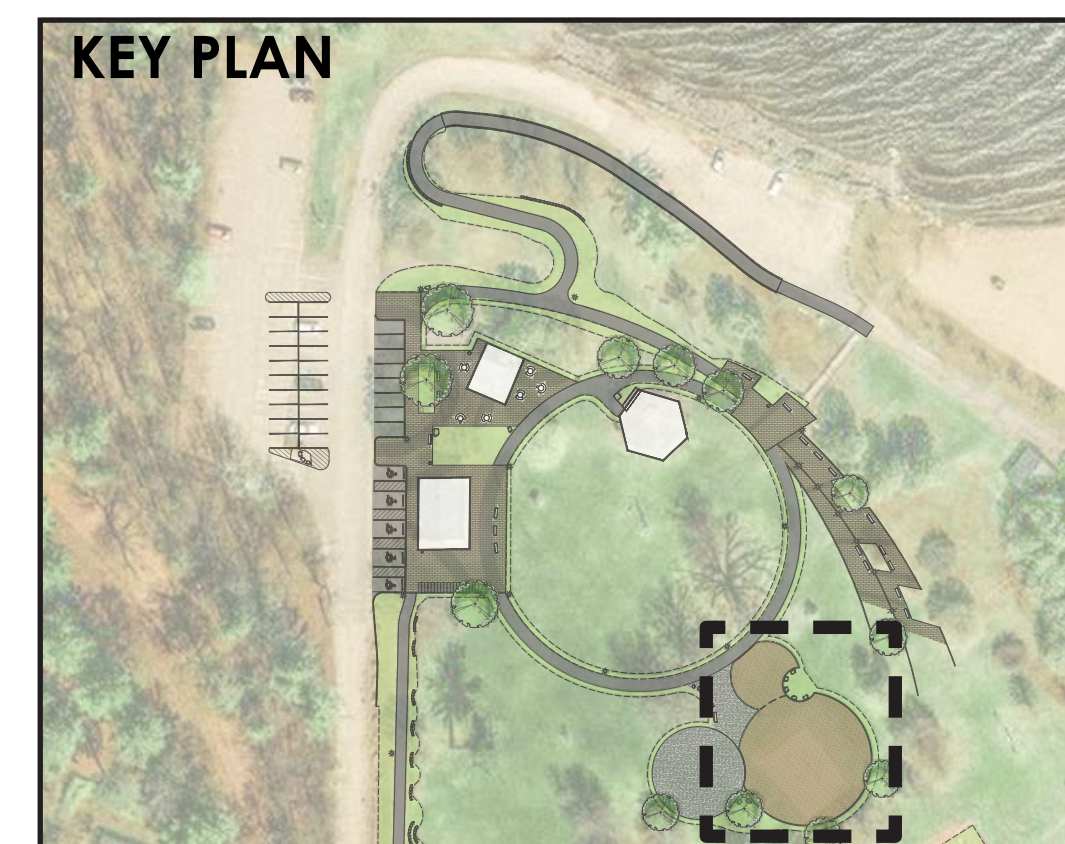
OPTION 4 - WOOD WAVES

» Play Features

- » Capacity: 80 children
- » Age Group: 18 months to 12 years
- » Accessible / Inclusive / Adaptive Elements:
 - Duo Spinner
 - Track Ride with Zero-G Seat
 - Ground-level Bongos
 - Ground-level Storefront Panel & Fun Seat
 - The Structure is accessible through a transfer station.

TELL US WHAT YOU THINK!

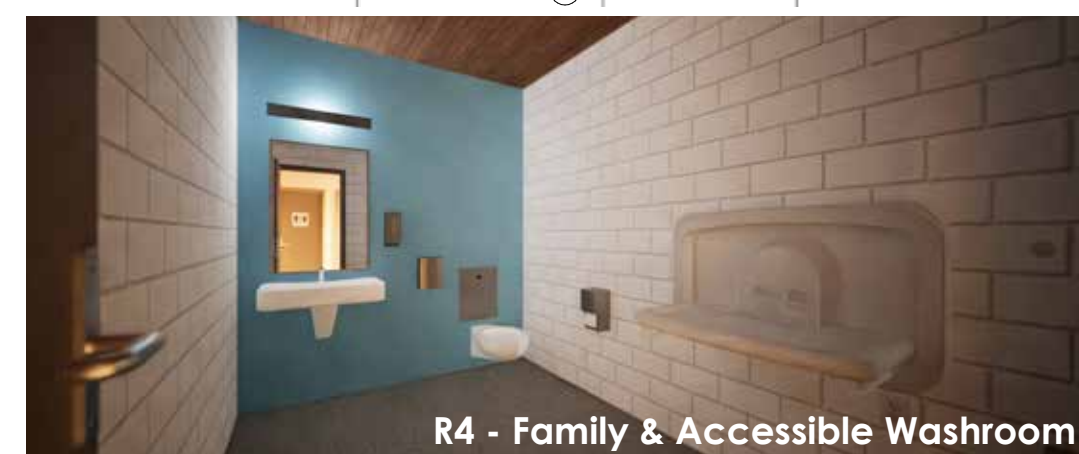
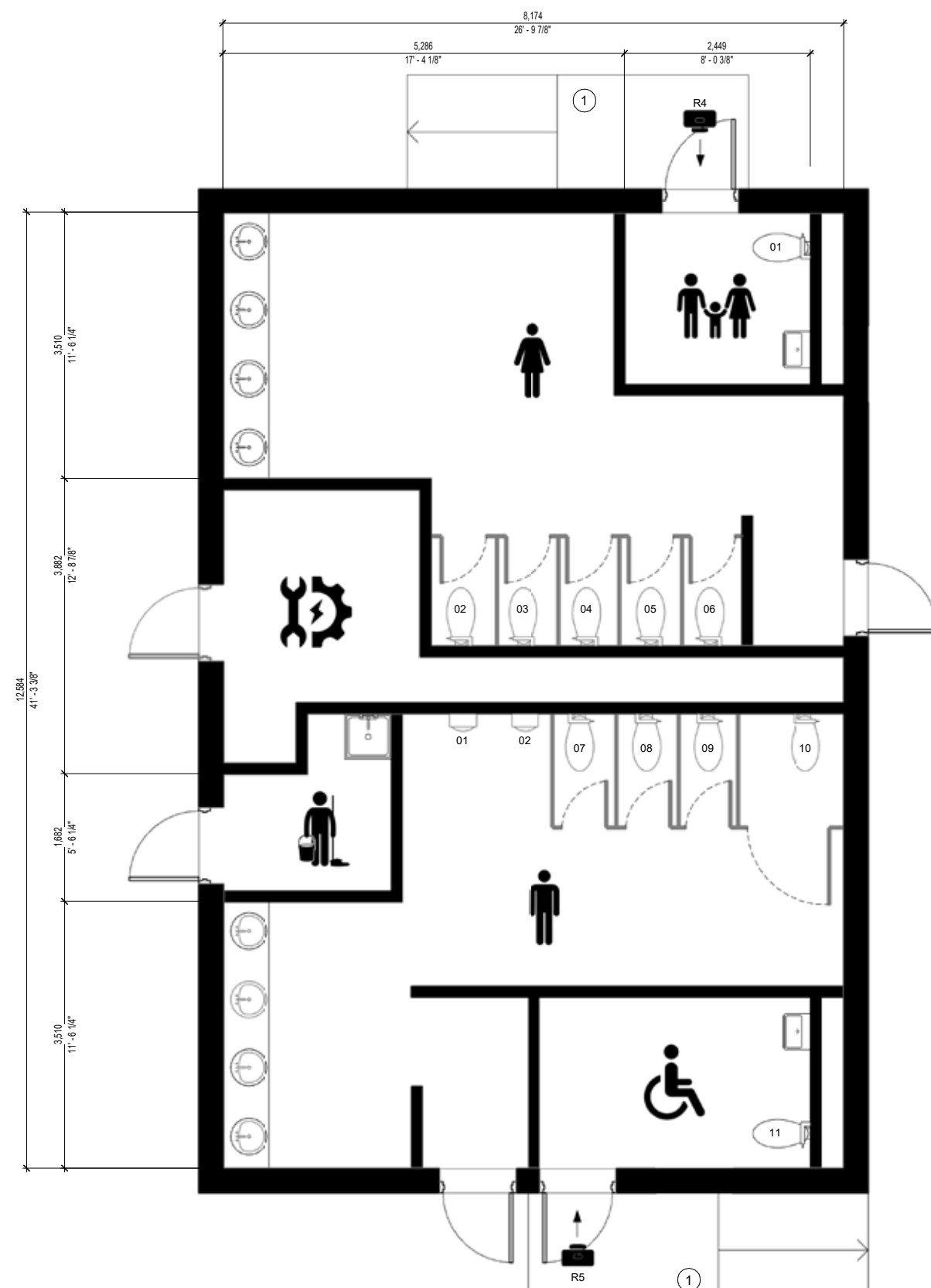
- » Use stickers and choose your favorite option.
- » Leave a sticky note.
- » Complete a comment sheet.





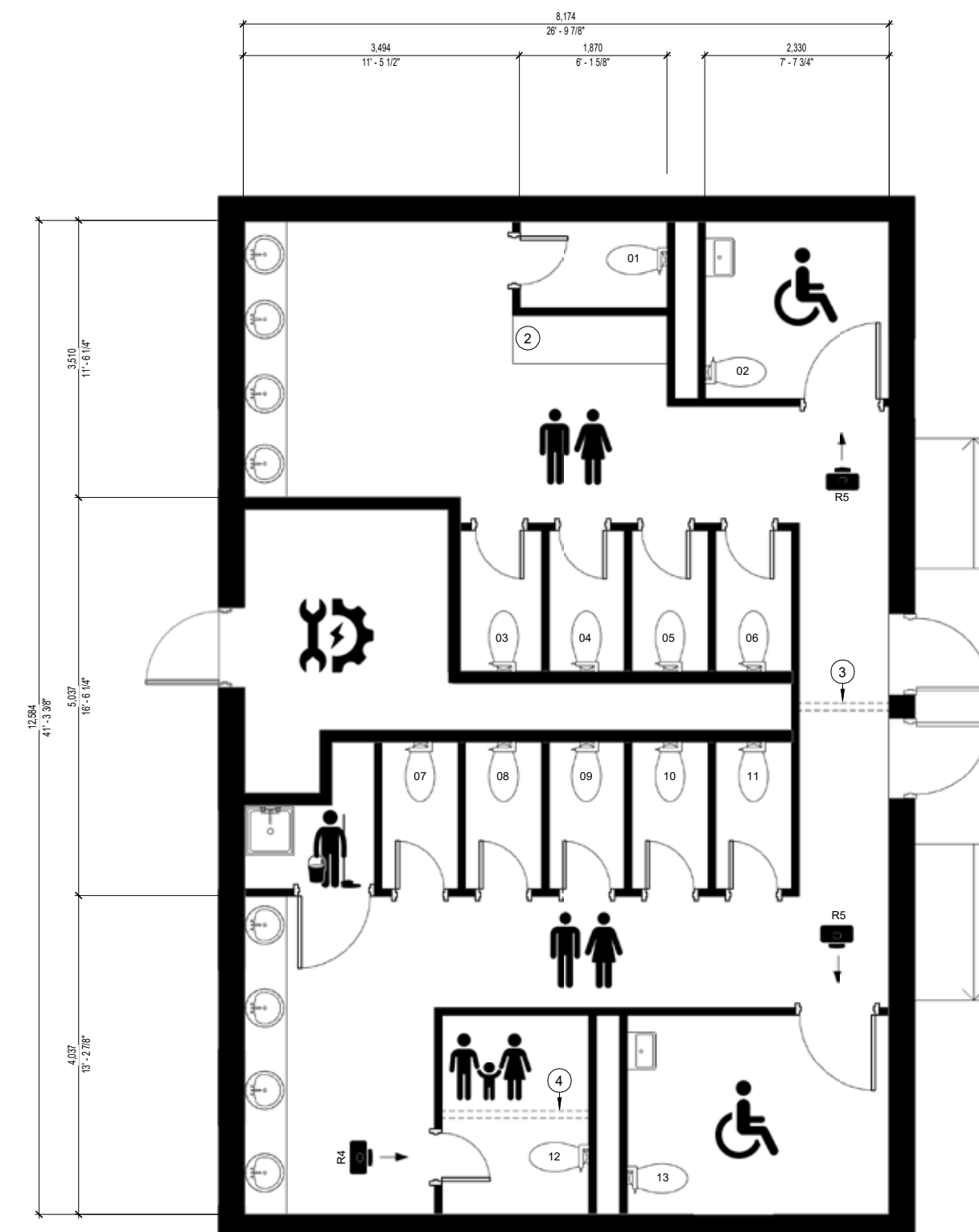
ROBERT SIMPSON PARK REFRESH Conceptual Design

WASHROOMS - ACCESSIBILITY UPGRADES



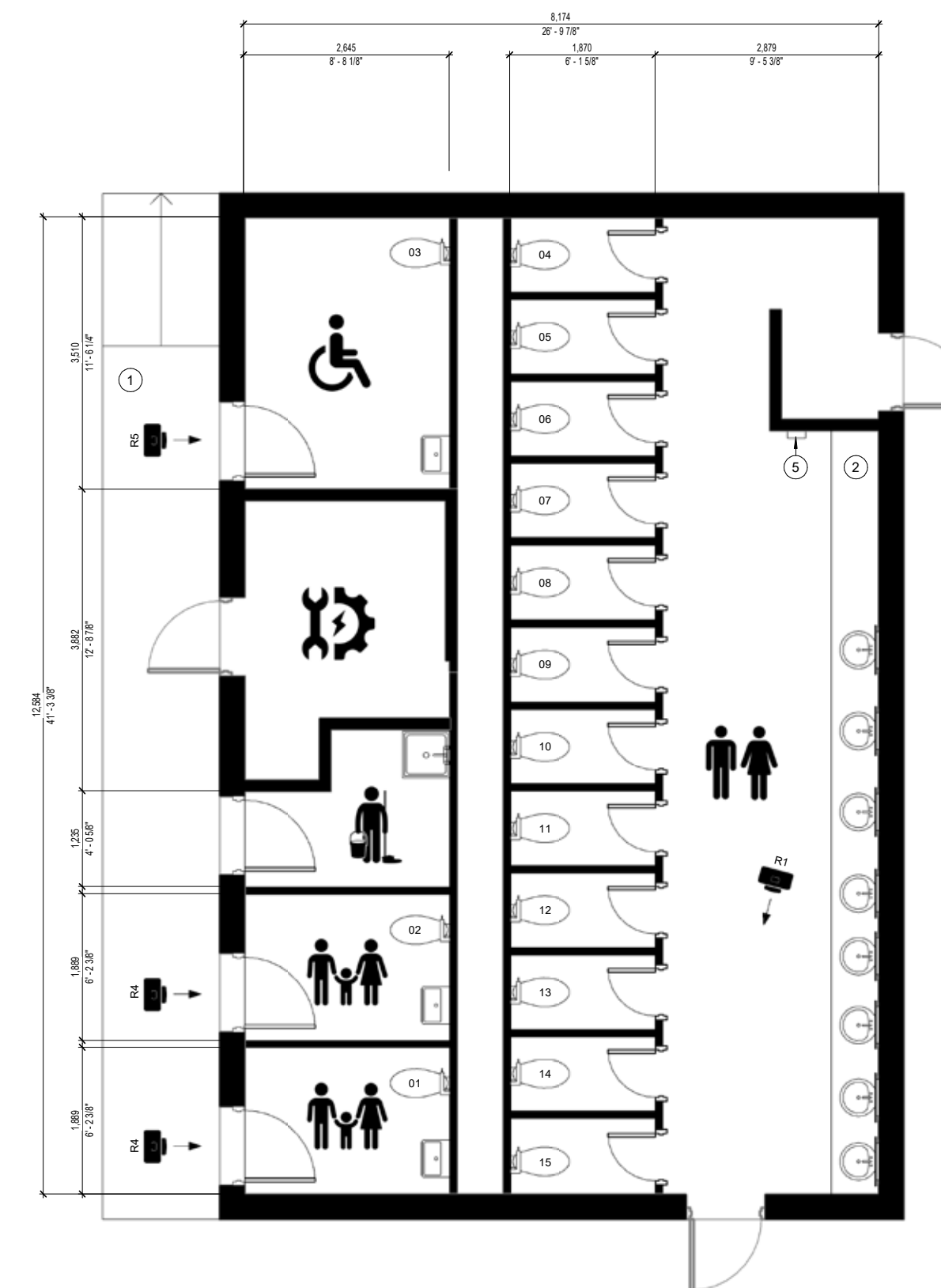
OPTION 1

- » Two separated washroom spaces.
- » The exterior entrances are reconfigured to suit new layout.
- » Addition of two individual washrooms accessible from the exterior.
- » No relocation of sinks or toilets.
- » Two urinals are still provided.
- » Relocation of the Janitor Room with exterior access.
- » Refresh of finishes and toilet partitions to create private stalls.



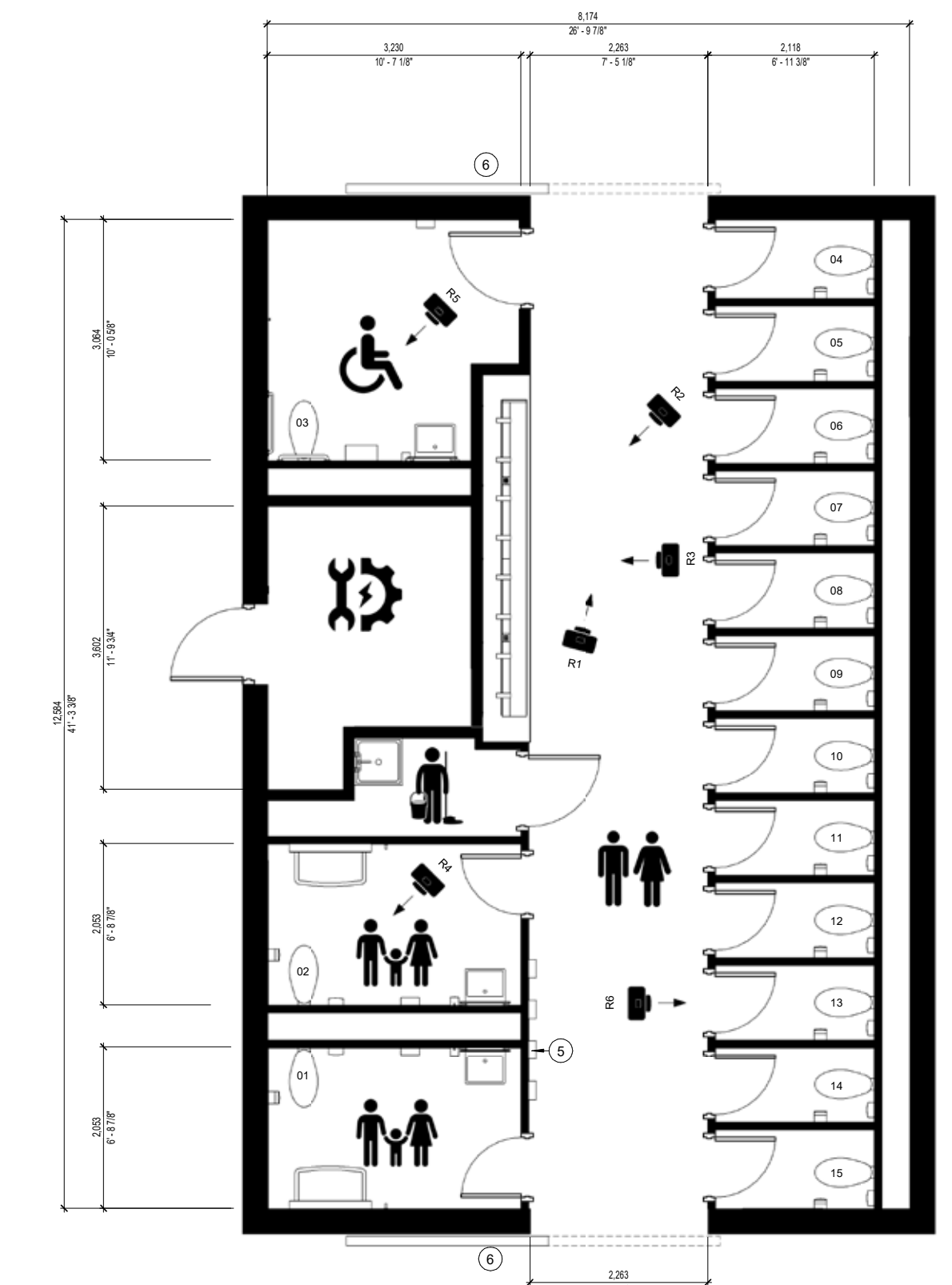
OPTION 2

- » Two connected washroom spaces.
- » The two exterior entrances are reconfigured to suit new layout.
- » Addition of two individual washrooms accessible from the interior.
- » No relocation of sinks.
- » Removal of all urinals.
- » Replacement of partition walls to create private stalls.
- » Option to combine two stalls and create one additional BF stall.
- » Relocation of the Janitor Room with interior.



OPTION 3

- » One main washroom space.
- » The exterior entrances are maintained.
- » Addition of three individual washrooms with minimum disruption to existing layout; all with exterior access fronting the roadway / parking.
- » All new private toilet rooms.
- » All new sinks and counter space with diaper changing space.
- » Relocation of the Janitor Room with exterior access.



OPTION 4

- » One main washroom space providing access to all washroom spaces.
- » Two new large exterior openings.
- » Addition of three individual washrooms.
- » All new private toilet rooms.
- » All new sinks and through sink.
- » Relocation of the Janitor Room with interior access.

TELL US WHAT YOU THINK!

- » Use stickers and choose your favorite option.
- » Leave a sticky note.
- » Complete a comment sheet.

LEGEND

- FAMILY & ACCESSIBLE TOILET ROOM
- PRIVATE TOILET ROOMS
- UNIVERSAL WASHROOM
- JANITOR ROOM
- MECHANICAL & ELECTRICAL ROOM

KEY PLAN

